

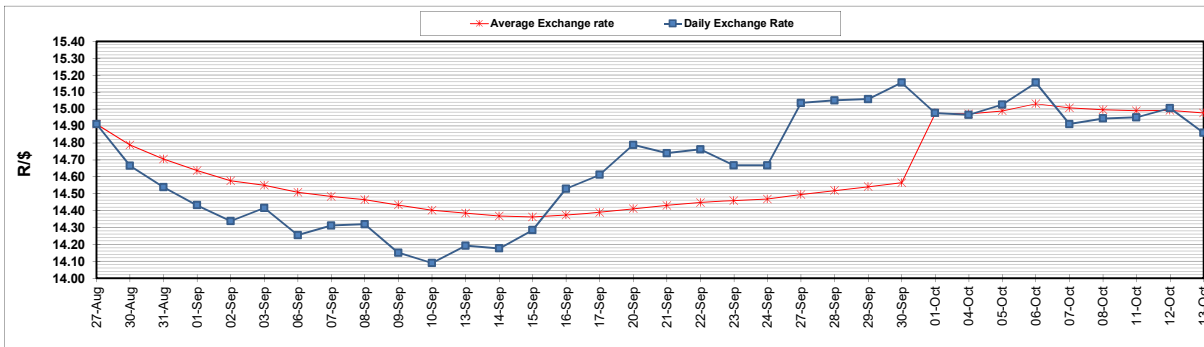
	PETROL 95 ULP	PETROL 93 ULP & LRP	DIESEL 0.05%	DIESEL 0.005%	ILL. PAR.
GAUTENG PUMP PRICE (SA c/l) AS FROM 06/10/2021	1,833.000	1,811.000	-	-	-
WHOLESALE PRICE (SA c/l) AS FROM 06/10/2021	-	-	1,571.780	1,575.180	980.488
SINGLE NATIONAL MAXIMUM RETAIL PRICE	-	-	-	-	1,240.000
BASIC FUEL PRICE - 13/10/2021 (SA c/l)	928.327	914.008	918.094	921.600	907.676
PRESS RELEASE CONTRIBUTION TO BFP 06/10/2021 - 13/10/2021 (SA c/l)	818.310	806.310	771.630	775.030	767.128
UNIT OVER/(UNDER) RECOVERY - 13/10/2021 (SA c/l)	(110.017)	(107.698)	(146.464)	(146.570)	(140.548)
AVERAGE BASIC FUEL PRICE 01/10/2021 - 13/10/2021	914.387	900.578	903.892	907.505	898.647
AVERAGE UNIT OVER/(UNDER) RECOVERY 01/10/2021 - 13/10/2021	(96.477)	(93.668)	(140.596)	(140.808)	(142.185)

ANALYSIS MOVEMENT OF AVERAGE OVER/(UNDER) RECOVERY

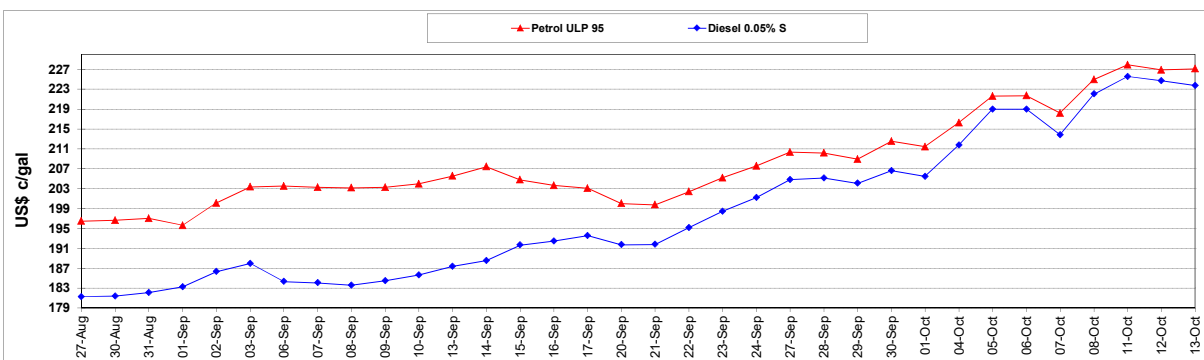
	PETROL 95	PETROL 93	DIESEL 0.05%	DIESEL 0.005%	ILL. PAR.
- MOVEMENT IN INTERNATIONAL PRODUCT PRICES	(71.354)	(68.924)	(115.760)	(115.874)	(117.495)
- MOVEMENT IN EXCHANGE RATE	(25.123)	(24.744)	(24.835)	(24.934)	(24.691)
AVERAGE UNIT OVER/(UNDER) RECOVERY 01/10/2021 - 13/10/2021	(96.477)	(93.668)	(140.596)	(140.808)	(142.185)

R/\$ EXCHANGE RATE - (R/\$14.8600 - 13/10/2021)

EXCHANGE RATE USED IN BASIC FUEL PRICE



INTERNATIONAL PRODUCT PRICES OF BASKET USED IN BASIC FUEL PRICE



BASIC FUEL PRICE IN SA CENTS PER LITRE

